



EXCITING NEW FRAGRANCE



NOW AVAILABLE IN OUR ODOUR NEUTRALISER RANGE

BLUE RASPBERRY

- Powerful odour elimination! A small spray goes a long way
- Monster sized, 750ml canister lasts a long time
- Overpowers nasty niffs with a pleasant, fresh fruity raspberry aroma

07-320-630 - Odour Neutraliser BLUE RASPBERRY Spray

W/S
£3.50

RRP
£8.40

LUMii

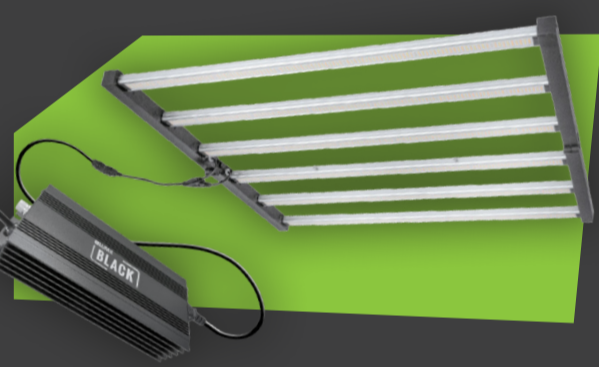
BLACK

NEW SHIPMENT EXPECTED IN STOCK IMMINENTLY - **DON'T MISS OUT!**

LED 720W 6 BAR FIXTURE

High performance, great quality & outstanding price!

- Full spectrum LED for the whole plant lifecycle
- Light output PPF - 1870µmol/s
- Efficacy - 2.62µmol/J
- Unit weight 7.8 kg – easy to hang
- Covers a growing area of 1.5 m x 1.5 m
- LED Fixture dimmable using ballast control
- Add a UV/FR kit for enhanced growth and yield



		W/S	RRP
03-155-130	LUMii BLACK LED 720w 6 Bar Fixture	£196.00	£450.00
03-155-135	LUMii BLACK Electronic 720w LED Kit	£219.00	£500.00
03-155-140	LUMii Electronic 720w LED plus 2 x 25w UV/FR Kit	£309.00	£716.00
03-155-100	PowerPlant Tube 25w UV/FR LED - Pack of 2	£90.00	£216.00

RAM FANS

BE SURE KEEP THEM IN STOCK!

Air circulation for any application! Keep your growing environment healthy. Fans available to suit any set-up.

- Circulate available CO₂
- Avoid condensation on leaves
- Break up heat stratification
- Powerful Air Circulators
- Versatile Clip fan and Multi fan
- Floor space-saving wall fans & Eco fan
- 'Go anywhere' pedestal fans



ram
RAPID AIR MOVEMENT®

		Power	W/S Price	RRP
08-355-150	RAM 23cm (9") Air Circulator - 3 Speed	40W	£14.74	£34.40
08-355-155	RAM 30cm (12") Air Circulator - 3 Speed	55W	£25.56	£59.60
08-355-160	RAM 40cm (16") Air Circulator - 3 Speed	100W	£33.31	£77.70
08-355-273	RAM 150mm Clip On Fan (6") - 15W	15W	£7.25	£17.40
08-355-278	RAM 180mm (7") Oscillating Multi Fan - 20W	20W	£14.63	£35.20
08-355-295	RAM 400mm (16") Wall Fan - 3 Speed	40W	£14.90	£35.99
08-355-297	RAM 450mm (18") Heavy Duty Wall Fan - 3 Speed	100W	£34.50	£82.80
08-355-320	RAM 300mm Eco Fan (12")	40W	£14.42	£33.60
08-355-325	RAM 400mm Pedestal Fan (16") Solid Base - 3 Speed	45W	£16.28	£38.00
08-355-327	RAM 450mm Heavy Duty Pedestal Fan (18") - 4 Speed	100W	£39.62	£95.10



LIGHTHOUSE
CONTROLLED ENVIRONMENTS

LIGHTHOUSE LITE TENTS

High quality tents for the cost-conscious grower! Add our budget range to your offering!

- Tri Layer 210 Denier material with LightHouse ULTRALUX reflective liner
- Quality Tivax double lined zips - easy to use and light proof
- Frame made from 16 mm steel poles with nylon joints
- One piece waterproof tray
- 4 ventilation openings – all double-lined with lightproof socks
- 2 low level passive air vents with fine (anti-mite) mesh and light proof closures.
- Filter straps included
- Door clips on all doors for fastening when open



		W/S	RRP
15-500-002	LightHouse LITE 0.6m ² Tent - 0.6m x 0.6m x 1.7m	£35.00	£84.00
15-500-005	LightHouse LITE 1m ² Tent - 1m x 1m x 2m	£54.16	£130.00
15-500-010	LightHouse LITE 1.2m ² Tent - 1.2m x 1.2m x 2m	£57.94	£139.10
15-500-012	LightHouse LITE 1.5m ² Tent - 1.5m x 1.5m x 2m	£84.39	£202.60
15-500-015	LightHouse LITE 2.4m ² Tent - 1.2m x 2.4m x 2m	£108.31	£260.00